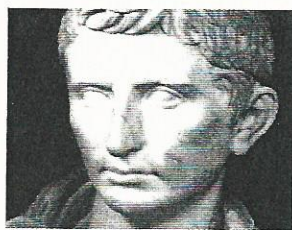


## Octavian

**GALLEYS** 250  
**INFANTRY** 16,000  
**ARCHERS** 3,000



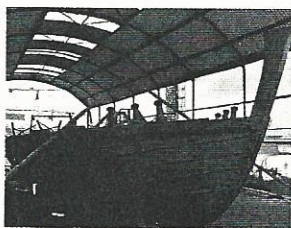
### OCTAVIAN

#### LEADER

Julius Caesar's adopted son and heir, Octavian became known as Augustus after founding the Roman Empire as the first emperor.

**Strength** Wise enough to give military command to Marcus Agrippa.

**Weakness** An average general with wavering public support.



### LIBURNIAN FLEET

#### KEY UNIT

A type of light galley that allowed the crew to rain down arrows and stones on their enemy.

**Strength** Easy to manoeuvre and take advantage of any mistakes.

**Weakness** Lack of strength makes it vulnerable to ramming attacks from larger ships.



### PLUMBATA

#### KEY WEAPON

Heavy and sharp lead-weighted darts crafted from iron with double the range of a full-sized arrow.

**Strength** The extended range makes it capable of wounding and even killing men from a great distance.

**Weakness** The plumbata requires a great amount of skill and training to fire successfully.

## 01 A BAD START

In a cruel twist of fate, Antony's forces suffer from a vicious malaria outbreak while they wait for Octavian's fleet. As a result, many of his massive ships are undermanned. Antony sets fire to the ships he can't man and clusters the remainder together tightly in anticipation.

## 10 The final few

Not all of Antony's ships follow him in retreat, but losing so many ships in a single blow dooms the remaining vessels. They fight long into the night, but the calm weather quickly turns foul and a violent gale batters the galleys. Unable to fight any longer, Antony's remaining fleet surrenders and most of the 300 ships taken by Octavian meet a fiery end.

## 02 A fatal betrayal

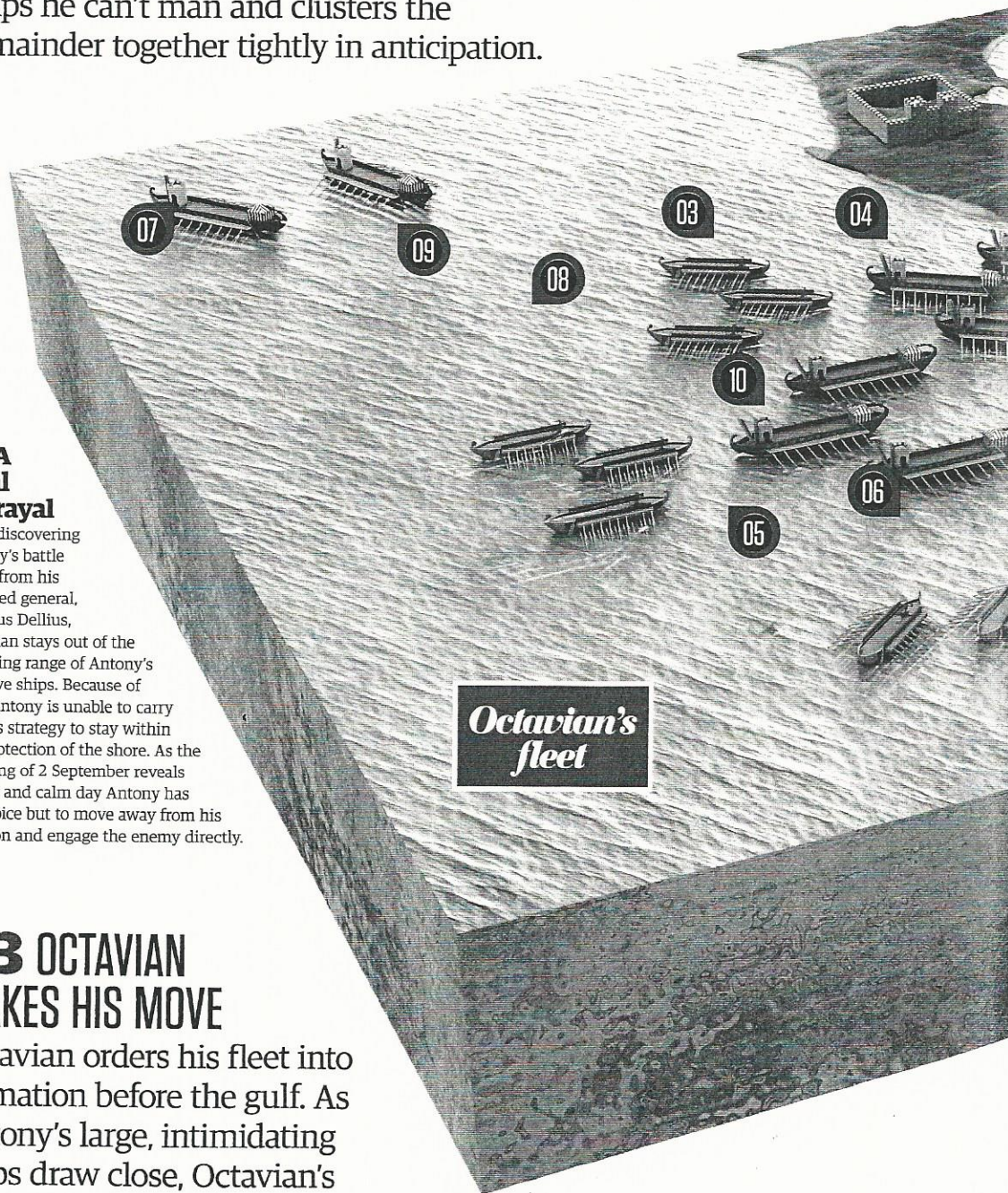
After discovering Antony's battle plans from his defected general, Quintus Dellius, Octavian stays out of the ramming range of Antony's massive ships. Because of this, Antony is unable to carry out his strategy to stay within the protection of the shore. As the morning of 2 September reveals a clear and calm day Antony has no choice but to move away from his position and engage the enemy directly.

## 03 OCTAVIAN MAKES HIS MOVE

Octavian orders his fleet into formation before the gulf. As Antony's large, intimidating ships draw close, Octavian's famed general Agrippa suddenly extends his left wing in an effort to row around Antony's advancing right flank.

## 04 The forces meet

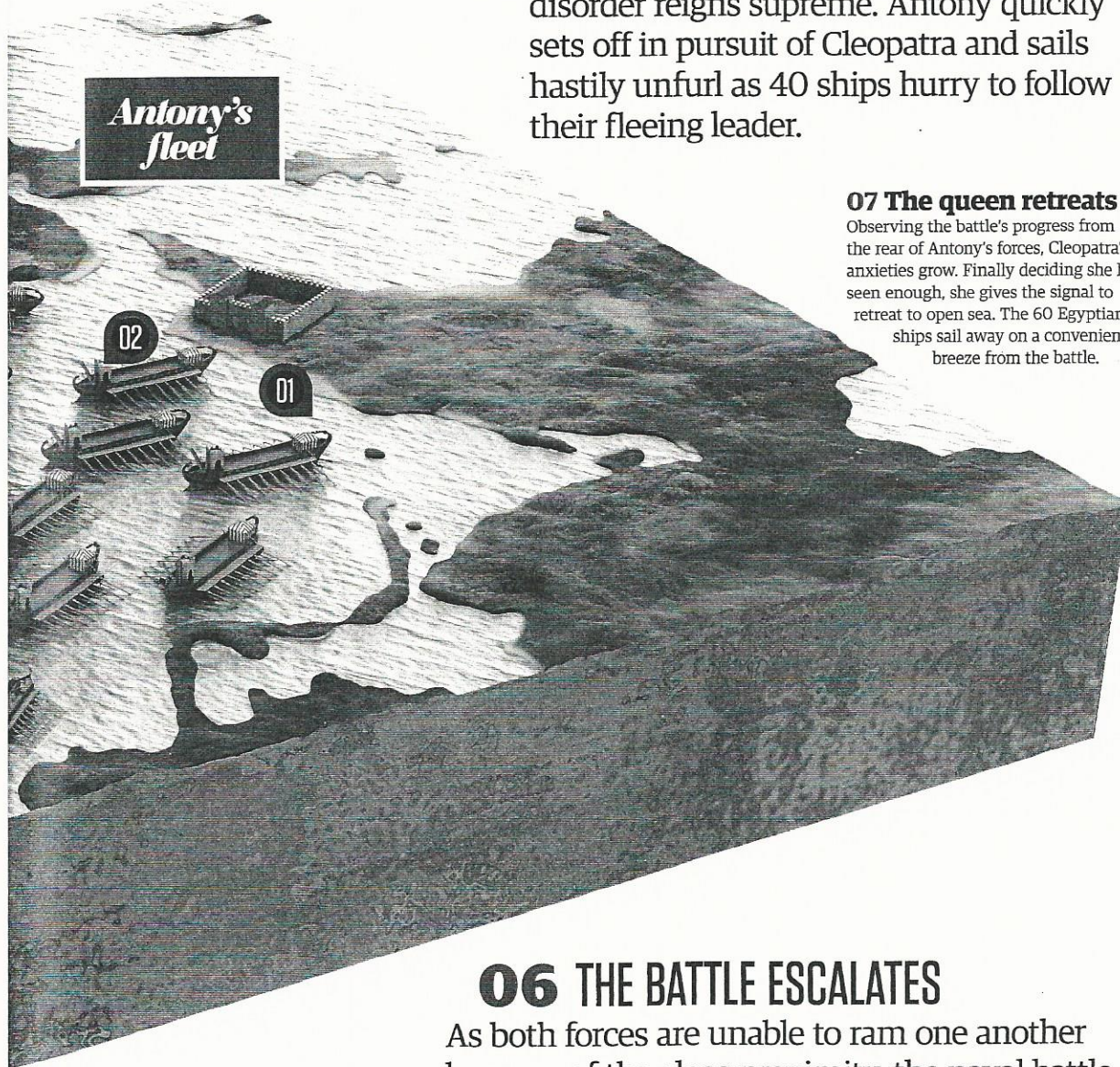
Lucius Policola, leading Antony's right wing, moves outward to meet Agrippa's advancing forces. As a result his formation detaches from Antony's centre and a gap is formed. Antony's troops are inexperienced and this manoeuvre throws the entire centre fleet into confusion.





## 09 The beaten commander

Clear of any danger, the heavy wooden towers are thrown from Antony's ships and he is finally able to catch up with Cleopatra's fleeing ships. Cleopatra allows him to board her royal galley but Antony cannot bring himself to face his lover. He walks to the bow of the ship and holds his head in his hands for many hours, unable to utter a word to anyone.



## 05 Battle of the centres

With Antony's centre exposed and in disarray, Lucius Arruntius, who commands Octavian's centre, sends his ships forward at full speed, straight into the enemy centre. A major battle erupts.

## 08 ANTONY FLEES

Having missed Cleopatra's signal, Antony watches from his ship, stunned by his lover's abrupt departure. The panic and confusion spreads quickly to his lines and disorder reigns supreme. Antony quickly sets off in pursuit of Cleopatra and sails hastily unfurl as 40 ships hurry to follow their fleeing leader.

## 07 The queen retreats

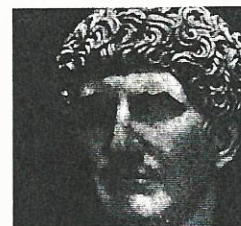
Observing the battle's progress from the rear of Antony's forces, Cleopatra's anxieties grow. Finally deciding she has seen enough, she gives the signal to retreat to open sea. The 60 Egyptian ships sail away on a convenient breeze from the battle.

## 06 THE BATTLE ESCALATES

As both forces are unable to ram one another because of the close proximity, the naval battle transforms into a land battle at sea, with men equipped with shields, spears and arrows attempting to board their opponent's ships. The two sides attack and retreat over many hours, with no advantage falling to either, and heavy fatigue descends over both sides. From Antony's decks burning missiles cascade down and cover the ships in a blanket of thick black smoke.

**Mark Anton**

GALLEYS 290  
INFANTRY 20,000  
ARCHERS 2,000

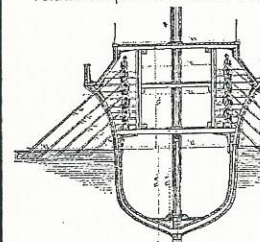


## MARK ANTONY LEADER

Famed politician and general, affair with Cleopatra strained relationship with Rome.

**Strength** A vast fleet and str support from the powerful Rc consuls in the Senate.

**Weakness** Distracted by his relationship with his lover Cle



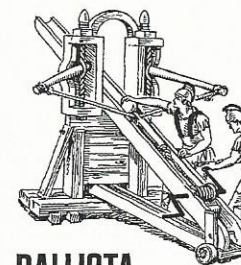
## QUINQUEREME FLE

### KEY UNIT

Gigantic, intimidating galleys featured huge rams and could very heavy.

**Strength** Armoured bronze ideal for ramming.

**Weakness** Slow and hard to manoeuvre, small failures could prove disastrous.



## BALLISTA

### KEY WEAPON

Huge towers built onto the decks, which catapulted missiles at the enemy.

**Strengths** Shot with massive devastating if on target.

**Weakness** A miss caused major delays and left the men on board extremely vulnerable.